



The Bergh Apton Newsletter

December - January 2015

Issue No. 136

Editorial Comment

The celebration for Guy Fawkes seems to have been very extended this year starting the weekend before the 5th Nov and well on into the week after there was a good show at Seething Airfield as well as Brooke in

our locality these were both well attended, however we had a bonfire and fireworks on Bergh Apton Church field which was enjoyed by those of us who attended, unfortunately there were only 7 of us. We missed the rest of the village. *Milton Harris*

*Wishing our readers
Merry Christmas and
a Happy New Year*



FAREWELL TO PETER & CHRISTINE KNIGHT

Peter Knight, Rector of Bergh Apton since the Summer of 1997, has left the Thurton Benefice of which Bergh Apton is a part along with Ashby St Mary, Framingham Pigot, Thurton and Yelverton-with-Alpington. He and Christine have gone to Tunis in North Africa to take up a challenge with the Christian Missionary Society there.

Peter's time as Rector came to a close at the end of September. After that he and Christine spent the time until late October, when they moved out of the Rectory on Ashby Road in Thurton, practising their French (the main European language in Tunis) and packing up the sort of household that one accumulates over seventeen years in one place. We hope that it was a happy time for them there as they raised their family of four (Tim, Sam, Jonathan and Joanna) from the time when they were small children until their adulthood.

The church's attention now turns to the search for someone to take Peter's place. That's quite a challenge bearing in mind that the chosen person needs to meet the aspirations of five different church communities who, in their turn, need to bear in mind the welfare and interest of all the inhabitants of those places – not just the congregation that meets in church on Sundays.

That task falls to the Churchwardens of the five parishes. They have been busy in recent weeks developing what is termed the "Benefice Profile" that gives interested prospective candidates a feel

for the job. It will tell them where we are, who we are, what we are, and where we hope to go in both a spiritual and a community direction that we will want the successful candidate to buy into.

The task of writing this Profile has been quite a daunting one but Bergh Apton's churchwardens Evy Sayer and John Ling have worked on it with their colleagues from the other villages to make sure that it does the job. The final say on its published form lies with the five Parochial Church Councils (PCCs) of the five villages who, by the time this Newsletter is published, will have seen it and, we hope, will have approved it as an honest and interesting assessment of Bergh Apton and its surrounding communities.

What we then aim to do is to identify, from the applicants for the job, one who will meet the needs of our rural parishes and that the representatives of the PCCs of the five villages agree is the most suitable. If that happens we could have a new Rector in post in the early Summer of 2015. That's about as early as it can possibly be, but the experience of other parishes indicates that it could be considerably longer.

In the meantime, with the help and advice of the Rural Dean, Robert Parsonage of Poringland Benefice, and of the Diocesan team in Norwich, the churchwardens of the five villages have organised themselves into a good working group to continue the life of the church in our villages until the time comes for them to hand over the reins to the new Incumbent – whoever he or she may be.

John Ling



COUNTRY DIARY *

MIND'S EYE

In the evening he sits by the fire, it is not really cold enough for one but he looks upon it as a friendly companion. In his mind's eye he sees again the small wonders he has seen and heard as he walked the path through the Small Wood earlier in the day. He polishes each memory and salts them away.

In the early morning mist bloomed and shrouded sky and land, nothing was defined and it had left a feeling with him of a presence in the air, an inward looking, a formless anxiety. The sun, pale as a sixpence, had gleamed now and then as it gathered strength, it still spoke of late summer while the mist spoke of autumn.

A robin cocked an eye, dark as a bramble pip, then perched and swooped, perched and swooped, darning the air. It sang its Autumn anthem in a thread of bright notes, it was composed from leaves, the fallen and the falling, the mist which blurred and blended, thinning sunshine and sharp showers. For a minute or two man and bird were neighbours, a moment of sharing.

He had picked up a shell of a hazel nut, brown and shiny as Spanish leather-oh! It had been carved into a bowl and the teeth marks gave the clue that the little craftsman was a vole and not a wood mouse or squirrel. There were no marks on the surface of the shell but the edge was ridged by sharp teeth. He had put it in his pocket, it was a gift, a luck nut and he sat fingering its smoothness.

The wind had freshened as he walked and it stirred the air plucking leaves from the poplar and blowing them away leaving the tree fish-boned. As the leaves fell they twisted catching first sunlight then shadow flickering like a shoal of little fish.

He saw the banks on each side of the path had colonies of domes, towers and spires, some pleated or frilled, fairytale architecture. Some were pale as milk and others aged to russet and gingery tones and some peppered with holes till they had become ghostly ruins. These were fungi, they connect underground in tangled webs, and he remembered thinking that it was just like the fibre optic cables which brought his broadband.

The sun shafted through branches and zebraed the path. Hogweed stems had dried to fluted columns the colour of old pound coins. The seed heads like

spokes of an umbrella support spider webs, they hung like little hammocks gemmed with moisture from the mist which sparkled in the sun and attracted his attention. He thought that otherwise he might have missed seeing the webs, all these alternative lives lived parallel to ours and are so often missed.

Pat Mlejnecky

* This article can also be read on the Country Diary page of the Bergh Apton website. There are also photographs taken by other people and well worth looking at. It is thanks to Chris Mewton that the village has a website again and it is very ably managed by him. Thank you Chris.

PRESENTATION TO HOSPITAL – UPDATE

After discussion between the family and the staff of Hethel Ward, Norfolk & Norwich Hospital, it was agreed that the £2000 raised in Jean's memory could initially fund a bed and a large fridge. The bed will be for the use of the relatives who need to stay there overnight, whilst the fridge can be used for both Nurses and patients alike. It is somewhere to keep food and drink for Nurses working the now common twelve-hour shifts, and also for certain items brought in for patients.

On Friday 1st November the Presentation was made by Roy, and Jean's daughter Clare, to Hethel Ward Sister Karen Hall, who expressed thanks on behalf of the Hethel Ward Equipment Fund. They were joined by other family members and staff and all were delighted with the new equipment including one of the new Pulse Oximeters – used to measure the amount of oxygen in the blood, and a hand-held fan – an item requested by patients. The two main items together cost just under £1000, and more equipment will be bought with the money remaining, in due course.

Before the Presentation ended with refreshments made by some Staff – including one member who had come on her day off especially for the occasion; family members made their individual thanks before leaving.

Roy Flowerdew

www.eaaa.org.uk

Tel: 0845 066 9999



Christmas Sing-A-Long

Bergh Apton Village Hall

Thursday 18 December, 19:30

Join the Sing! Sing! Sing! group for singing and mince pies. Enjoy refreshments and take a chance on the raffle and prize auction which will be held on the night.

Tickets £2.50

For more information email Karen: thomastbonsell@aol.com

In aid of the East Anglian Air Ambulance



We need you today. You may need us tomorrow.

Registered Charity No: 1083876

**BERGH APTON COMMUNITY
ARTS TRUST
LANTERN MAKING WORKSHOP
with KATE MUNRO
SATURDAY 18 OCTOBER**



As a visitor to the village I was interested to attend the willow lantern making day at the Hall as I don't have classes like this at home. Kate showed us two shapes of a fish and an old fashioned lantern that looked complicated but with great patience she encouraged us to bend and fastened the dampened willow from the Somerset levels and then coated it with tissue paper. I was surprised that it is weather proof so with two candles lit inside, I have a pretty acceptable lantern to take back home to embellish for use at Christmas.

Annie Ball



The workshop with Kate was such a success! Amazing lanterns were created with a willow framework and covered with strong tissue paper. Everyone, after initial guidance, went their own way to make very imaginative shapes to later insert lights, either LED or candles. It was incredible how different and imaginative they were and Kate certainly enthused us all to the extent of decorating them too. The thought of carrying on making more when back home was very much in most of our minds.

Janice Burgoyne



Having lived for many years with acres of osier beds beyond the dyke at the bottom of the garden it was intriguing and really enjoyable to venture into the creative world of willow. Kate Munro, our tutor for the day, greeted us apprentices to the possibilities of using willow. After a briefing of what we could do we were encouraged to explore our own ideas and achieve our ambitions. It was a rewarding session and stimulated ideas for many future projects. Many thanks to both Kate Munro and Pat Mlejnecky for a very worthwhile and enjoyable day.

Steve Oatley



Sad News

As we go to press it is with great sadness that we have to announce the death of Bill Boardman on the night of Friday 14th November.

He was known to many of us and we extend our sympathy to his family.

THE NORFOLK ARTS AWARDS 2014

The Cathedral Hostry was thronging with long dresses and black ties and the odd trouser suit and coloured tie! Champagne was proffered and to provide a protective cushion - a Booja Booja chocolate!!!

With Hugh Lupton and I, some 150 people were gathered for the Norfolk Arts Awards and some looked decidedly 'arty'.

A brief, filmed intro by an actor who had been rejected in all his early interviews, exhorting those Nominees that "don't win" to view the rejection as a "spur"!

And then a brilliant, joyous performance by the Norwich Young Peoples Theatre Voices, creating an atmosphere of "happy".

This led straight in to the awards, with a clip of each of the three Nominees for each category, interviewed on film in September. The first Award was made to "Galley Beggar Press" for its innovative publishing. It is closely associated with the BookHive in Norwich.

The second was "The Theatre Education Award" sponsored by the Norwich Theatre Royal, and it covered the breadth of the county. The Nominees were:

Kings Lynn Arts Centre
Bergh Apton Cycle of Mystery Plays
Charlotte Arculus & the Theatre of Adventure - The Magic Adventure Show in Gt Yarmouth.

Judging from the brief film clips and interviews there was an obvious winner.

The 'Theatre of Imagination' led by Charlotte Arculus, most certainly deserved their success, evident from the whole hearted applause and congratulations, when Peter Wilson of the Theatre Royal, handed the Award to Charlotte.

Her project, started in 2000, has inspired and continues to inspire. Their website:

"Theatre of Adventure is an acclaimed international company that specialises in street theatre, interactive, outdoor and site specific theatre. The focus of their work is the journey of the audience. The performance work is highly

visual, often musical and very comical. Theatre of Adventure also provides ground breaking educational and community work centering on performance techniques and the relationships between performer and audience.

As highly experienced educators, Theatre of Adventure offer new, creative takes on delivering the curriculum to all age groups and have developed schemes of work with a multi-arts approach. These include combining comedy, music, installation, visual art and film work. They collaborate with a variety of amazing facilitators to provide exciting and creative training experiences."

There were 16 awards in all and they reflected the vibrant, varied Norfolk arts scene of which we are a part.

Charlotte Arculus before the ceremony had said to me "Bergh Apton is a phenomenon, an icon".

And the EDP cameraman, Simon Fuller (who one might say has seen it all!) said that he really loved his afternoon trying to capture the Mystery Play. Fun, different, involving.

So, our congratulations to Charlotte Arculus.

And a very big Congratulation to all who made the Mystery Play Cycle such a success. You're all winners really! Nomination for an Arts Award at all was an unexpected bonus. As for the "spur"!!??

BACAT is delighted to announce that the level of external grants from the Arts Council, South Norfolk Council and numerous private charities covered all the costs of commissioning the Cycle, its production, of community and schools workshops and musical training as well as the specially commissioned commemorative booklets. The small surplus achieved will be put towards trying to publish a pack for other communities, at home or abroad, that might be interested in producing the Cycle themselves or perhaps towards a further production.

Christopher Meynell



Gallery address

The Gallery
Anteros Arts
7-15 Fye Bridge St
Norwich NR3 1LJ

Exhibition dates

Thur 15th to Sat 24th
Jan 2015
Open 9am to 5pm
(Gallery closed Sun 18th)

Private view Wed 14th Jan
(by invitation)

Madeline Smith Memorial Art Exhibition

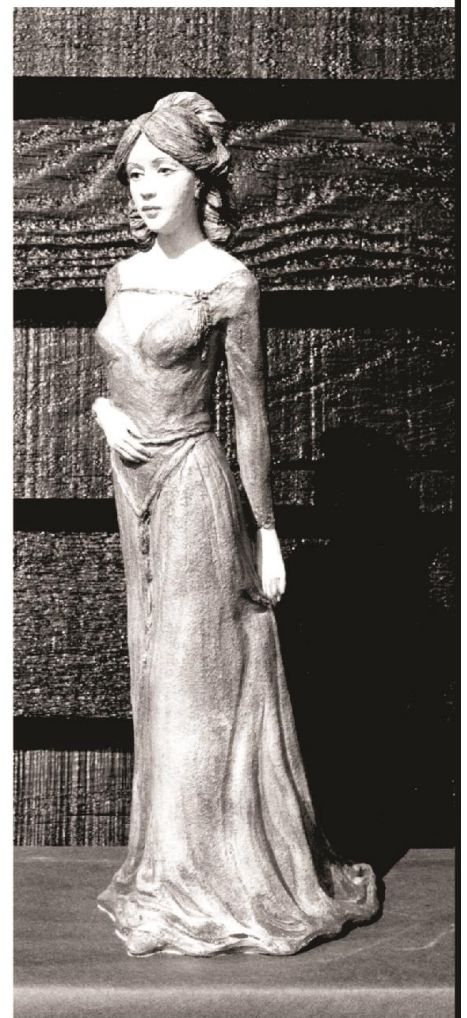
A memorial exhibition showcasing 50 years of work by the late Norfolk artist Madeline Smith will take place in January at the Gallery at Anteros Art Foundation in Norwich. The work has been carefully selected and curated by her daughter, Sam Hart.

Commenting on the show, Sam said: "This final exhibition of my mother's work will celebrate her life as an artist and the great talent she had, and will commemorate the one year anniversary of her passing. The collection will illustrate her creative journey, from her career as a graphic designer in the mid 1960's, through the peak of her commercial work as a sculptor, right up to hobby work in late 2013. It includes many of her note and sketch books, as well as some of her finest pieces of sculpture."

Works on display will include sculptures, book illustrations, printed etchings, watercolours, oil paintings, jewellery, knitting and textiles.

For the last time, many pieces of Madeline's artwork will be on sale, alongside her art materials and books. Other works kindly on loan to the exhibition by collectors, friends and family.

If you are the owner of a piece of Maddy's artwork, or would like further info on the exhibition, please contact Sam on 07973 562836.





Kickstart

the moped hire people



Kickstart is a registered charity established to assist people within Norfolk, Suffolk and Cambridgeshire to either start work or help to maintain current employment.

If lack of transport is restricting your potential to start work or maintain your current employment Kickstart may be able to help. Depending on funding we may also be able to assist with attending training or further education.

In exchange for a weekly contribution Kickstart can supply a fully insured and maintained 50cc moped or 110cc scooter, a 50cc moped can be hired from as little as £4.28 per day.

For further information please contact Kickstart on 01362 699923 or visit our website www.kickstartmopeds.co.uk



Bergh Apton Community Mini-Library & Information Hub



The Bergh Apton old-fashioned phone box on school road has been given a new lease of life since being bought for £1.

Karen Myhill from school road and also on the parish council has transformed the red phone box into a community mini-library and information hub.

There are around 200 good quality books which people are welcome to borrow or exchange.

You can also leave any of your unwanted books in the mini-library or I will collect them from you, please give me a call on 01508 480657.

The mini-library will be open 365 days of the year, 24 hours a day.

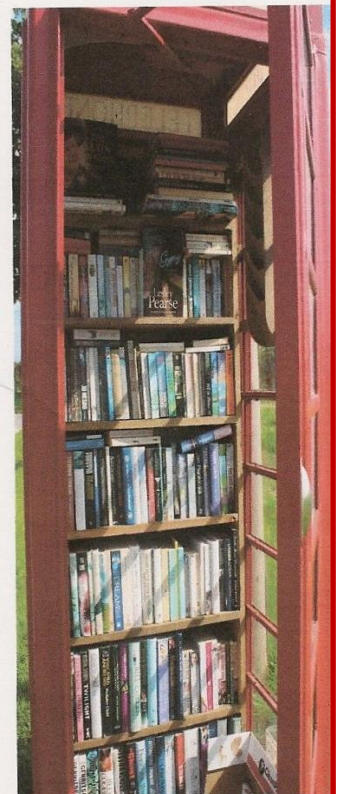
I will be doing regular checks to keep stock high also to keep clean and tidy.

The mini-library will have 2x5 pocket wall mounted holders which will display leaflets on our village walks, maps etc so please feel free to have a look and take if needed.

I would like to thank Tony Byford for the wood to make the large book shelf also John and Trevor Myhill for making the book shelf and fixing into the phone box, also John Myhill for making the leaflet holders.

Happy reading.

Karen Myhill



Dates for your diary

DECEMBER 2014

5 th	19.00 for 19.30	Christmas Bingo
7 th	12.30	Christmas Lunch
10 th	19.30 for 19.45	B.A. Society Christmas dinner at the George & Dragon
18 th	09.30 to 14.00	Decorate the church for Christmas
18 th	19.30	Carols Sing-a-Long at Village Hall
20 th	10.00	BACT Workday. Meet at Church Field
20 th	19.30	Conservation Trust party at Flint Cottage
21 st	18.00	Carol Service in church
22 nd	18.00	Carol singing round the village. Meet at Village Hall
24 th	16.00	Crib Service at Church
24 th	23.30	Midnight Service at church

JANUARY 2015

1 st	09.00 – 12.00	New Year breakfast at the Village Hall
4 th	11.00	Unity Service at Church followed by Bring & Share Lunch at Village Hall
6 th	19.30	PCC meet at Church
7 th	19.30	Parish Council meets at the Village Hall
17 th	10.00	BACT Workday. Meet at Church Field
21 st	10.00 - Noon	Coffee & Catch Up at the Village Hall
22 nd	10.00	BACT Workday. Meet at Church Field
27 th	12.30	Tuesday Friends lunch at Church
31 st	09.00	11 Says stuffing at Bramerton Village Hall

Regular Activities

Monday	17.00	Dog Training Village Hall
Tuesday (Alternate)	10.00-13.00	Painting Class Village Hall
Thursday	19.30	Sing-a-Long Village Hall
Friday	10.00-11.45	Yoga Village Hall

Activities Contacts

(BACAT Workshops) Pat Mlejnecky: 01508 480696
 (Conservation Trust) Stephanie Crome: 01508 480573
 (Local History) John Ling: 01508 480439
 (Village Hall) Hilary Ling: 01508 480439
 (Painting Class) Barbara Fox: 01508 550168
 (Singing) Karen Bonsell: 01508 480018
 (Bergh Apton Society) Lynton Johnson: 01508 480629

The Bergh Apton Newsletter is published with the financial support of the following organisations:
 Bergh Apton Community Arts Trust, Bergh Apton Conservation Trust, Bergh Apton Local History Group, Bergh Apton Village Hall, Bergh Apton Parish Council & Bergh Apton Parochial Church Council.



The Copy Date for the next issue is 10th January.

Please send articles to me
 Milton Harris [Editor] at
town_farm@btinternet.com
 Thank you

ALL MY OWN WORK

The views I expressed in the August - September Newsletter concerning the Cycle of Mystery Plays are entirely mine and no organization or individual was involved.

I stand by my views.

Pat Mlejnecky

Overweight volunteers wanted to test the health benefits of blueberries



Scientists at Norwich Medical School, University of East Anglia (UEA), are seeking 50 to 75 year old men and postmenopausal women (≥ 1 year since last period) to test if 6-months of freeze-dried blueberries improves aspects of health linked to heart disease and diabetes. Participants should be overweight, non-smokers and not currently taking hormone replacement therapy. Those prescribed cholesterol lowering statins and / or blood pressure lowering medication are eligible to take part. A reimbursement for travel, time and level of involvement is included. Some dietary restrictions (e.g. avoiding blueberries) will be required during the study. For more information, visit our website www.blueberrystudy.org, call 01603 592424 or email circles-study@uea.ac.uk.